

Tanz der Matrosen

♩ = 90-165

G-Dur

6

10

14

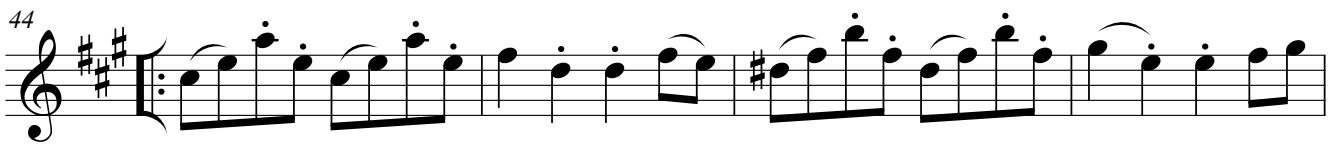
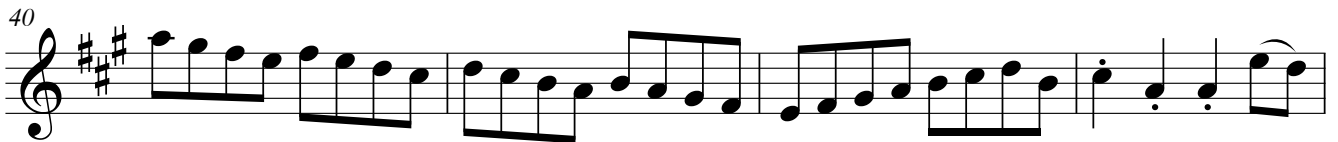
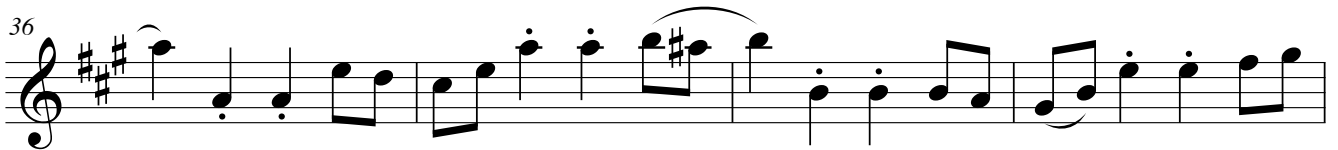
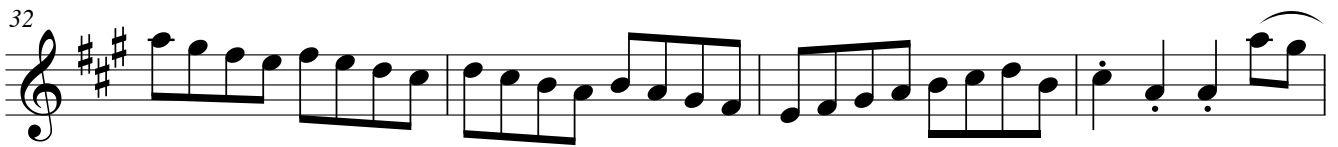
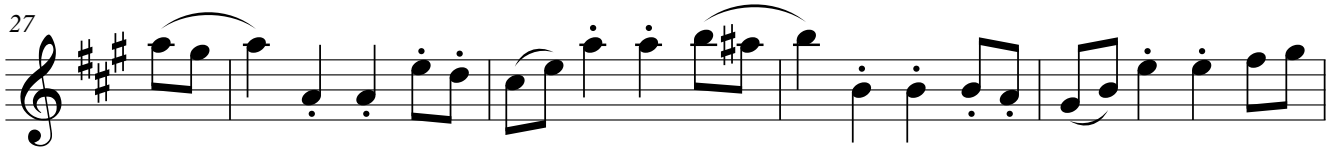
18

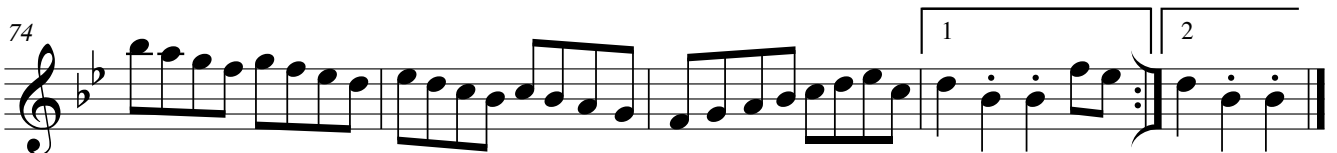
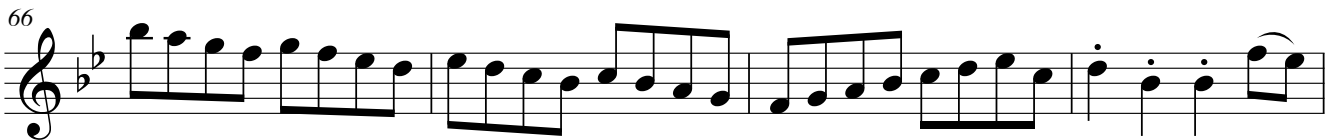
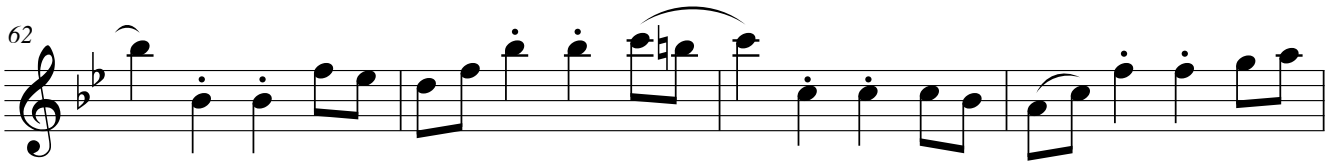
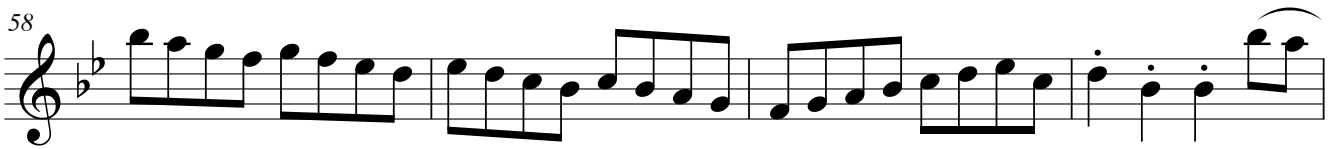
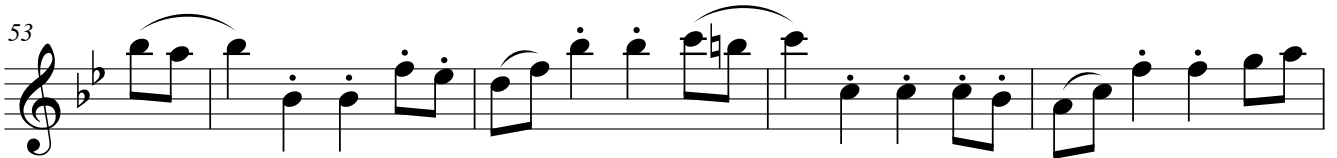
22

1

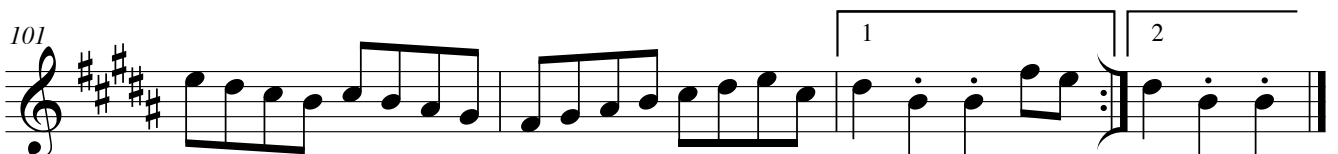
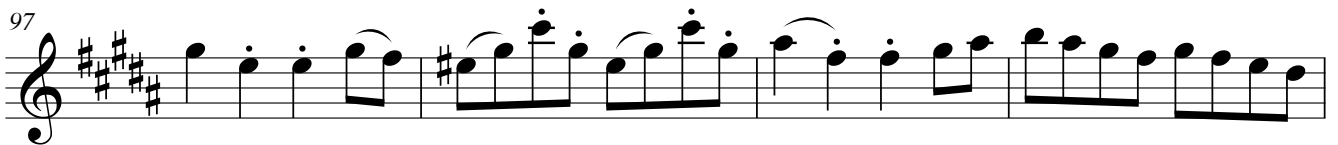
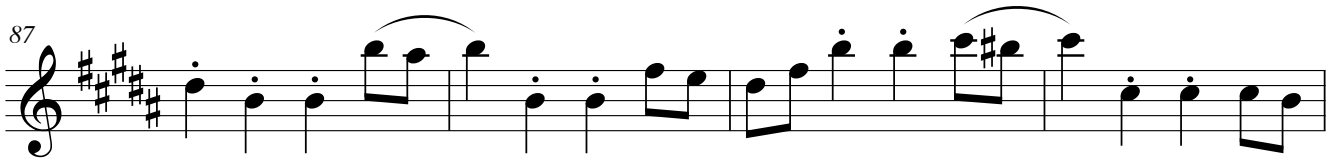
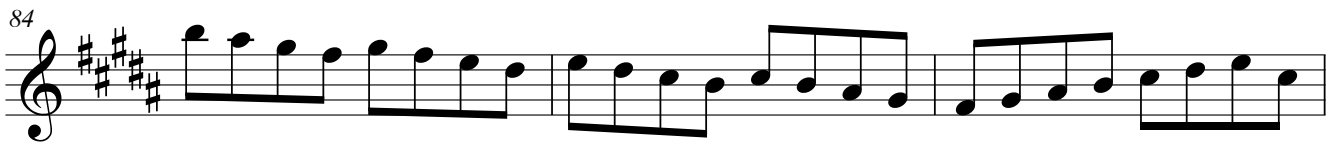
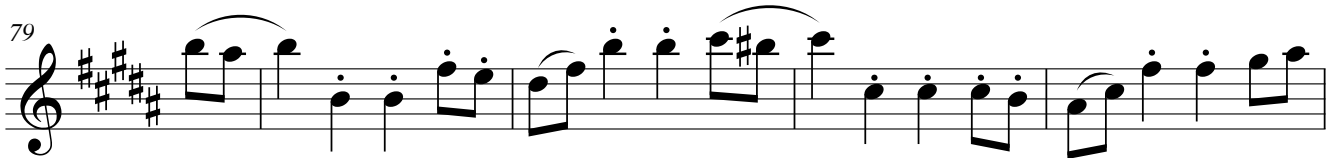
2

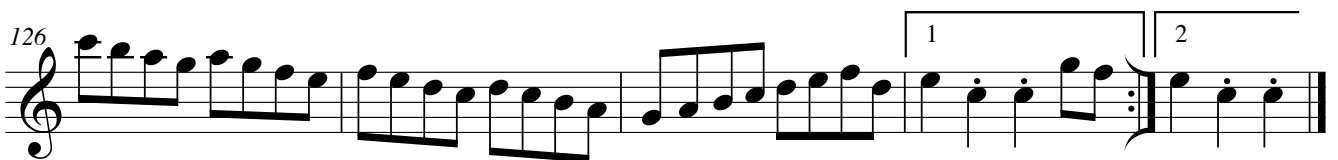
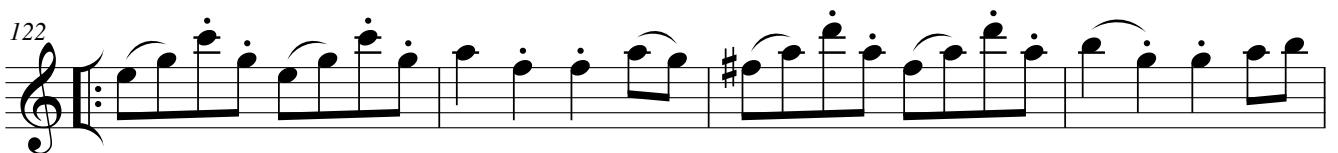
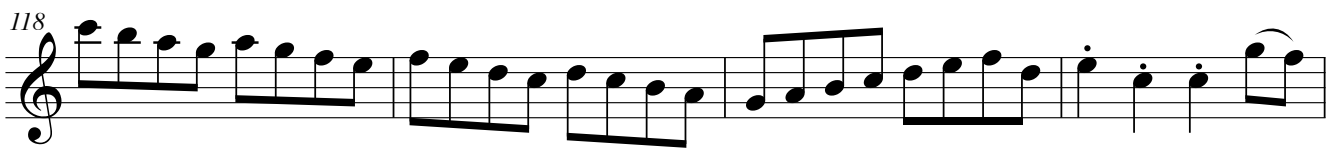
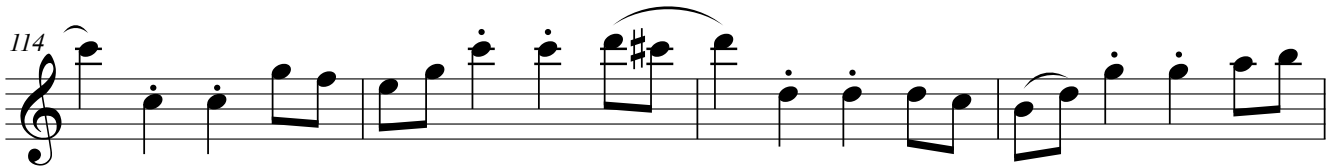
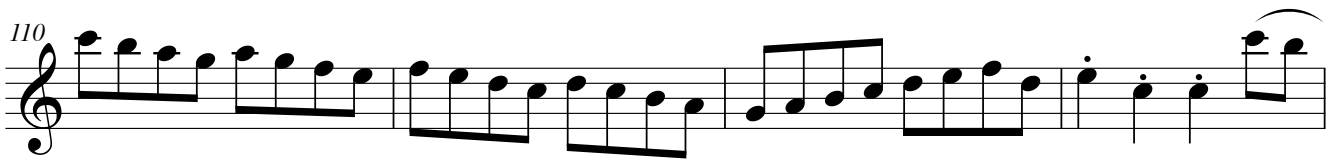
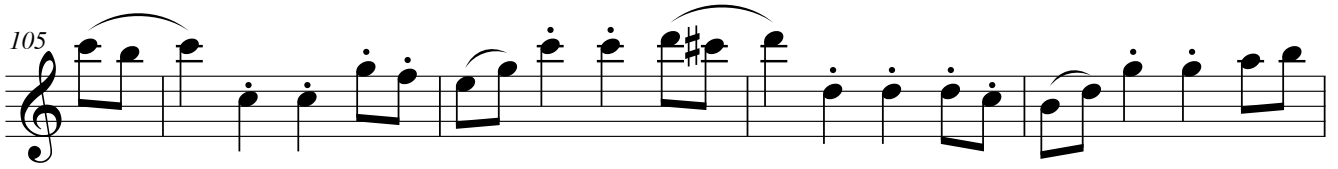
Tipp: Spiele von Anfang an mit Metronom, erst wenn Du es im langsamen Tempo fehlerfrei spielen kannst, steigere das Tempo

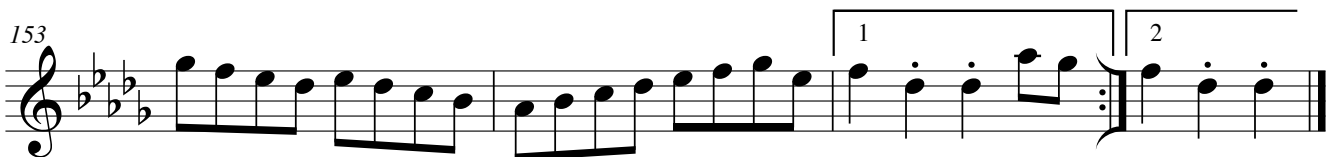
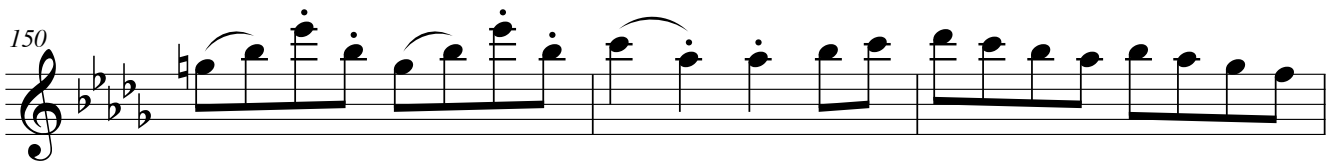
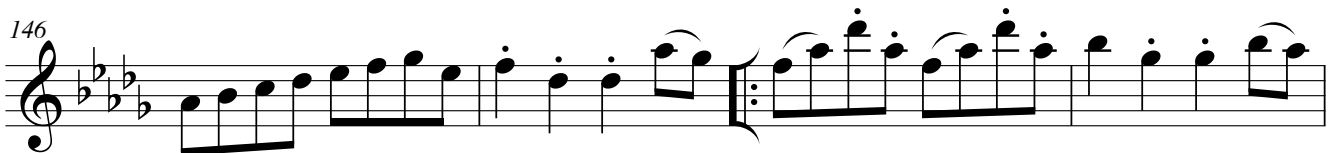
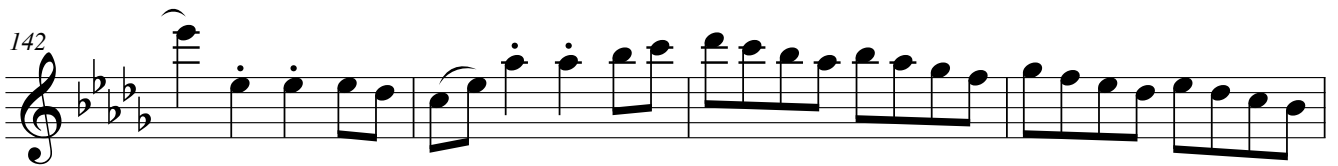
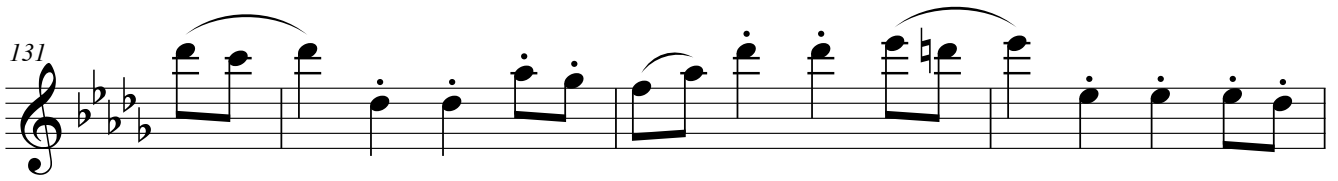
A-Dur

B-Dur

H-Dur



C-Dur

Des-Dur

D-Dur