

Tanz der Matrosen

♩ = 90-165

B-Dur

6

10

14

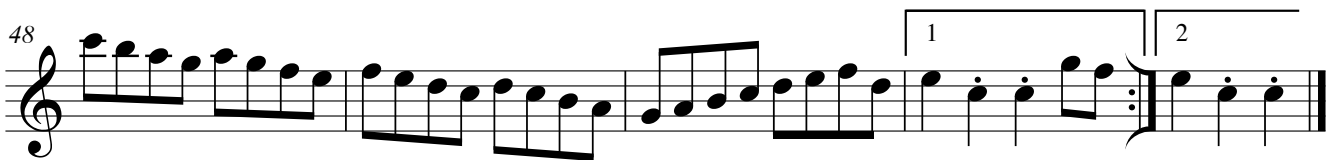
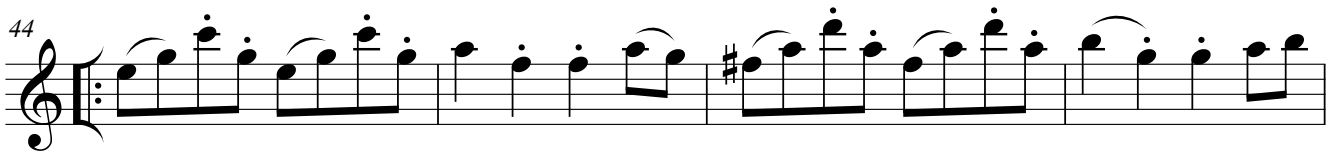
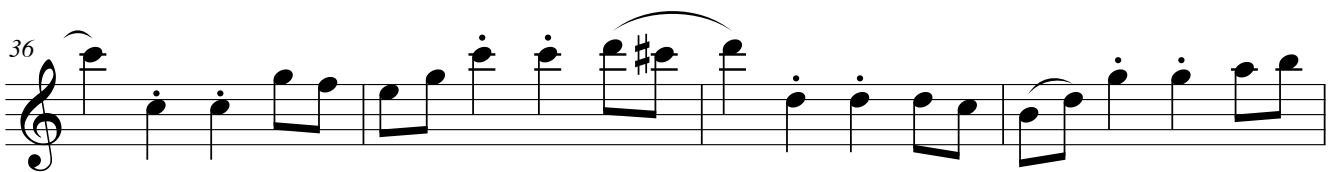
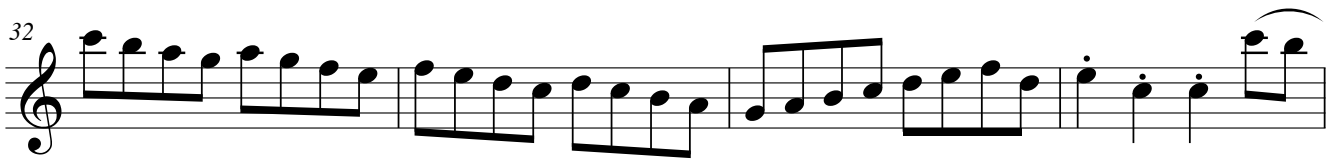
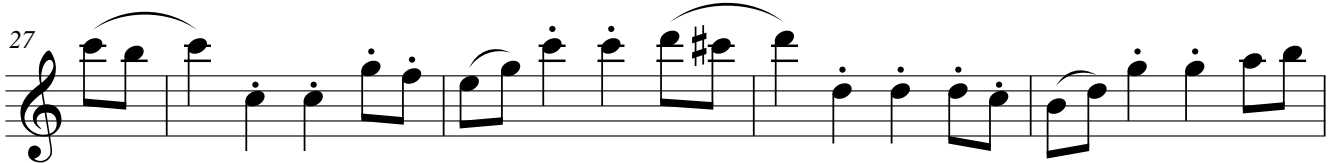
18

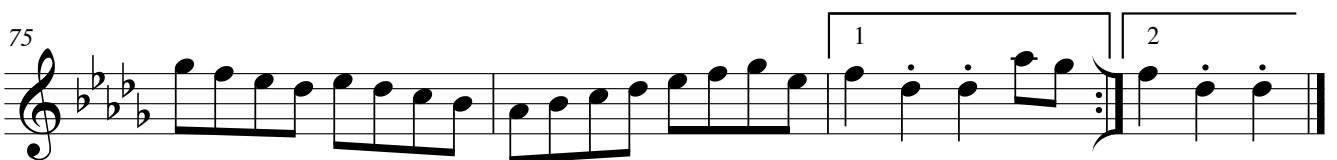
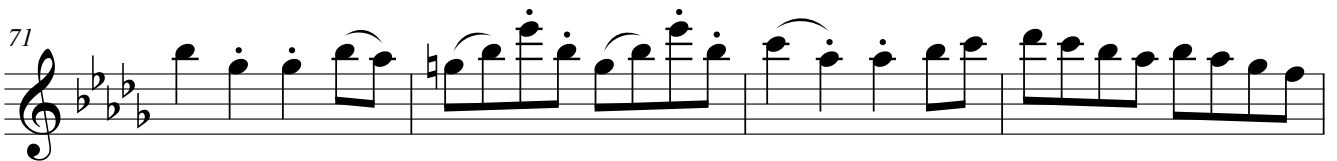
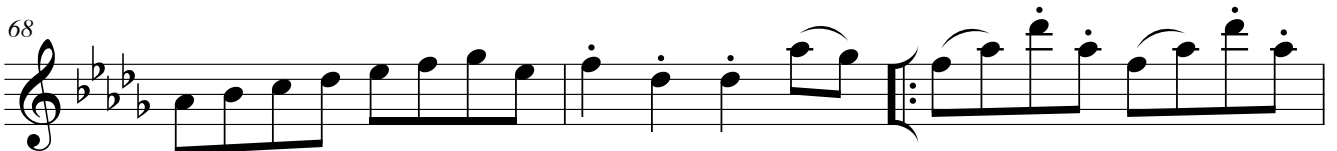
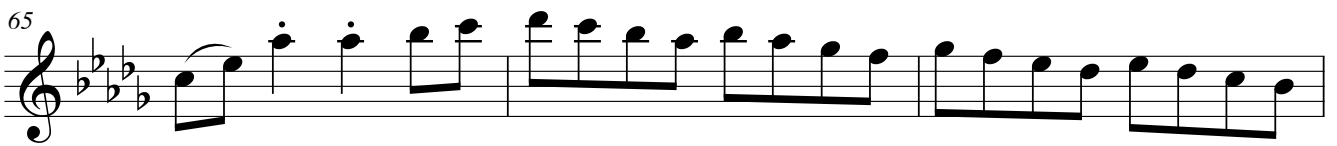
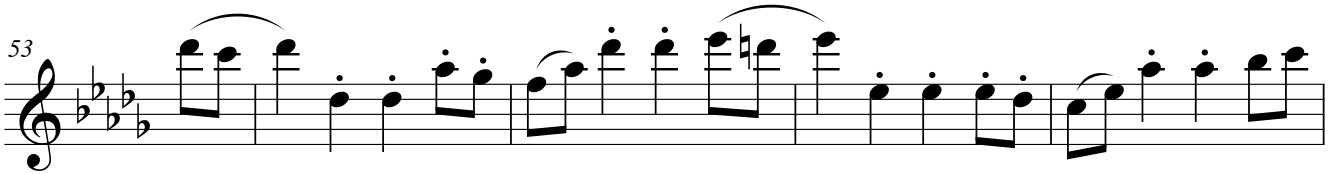
22

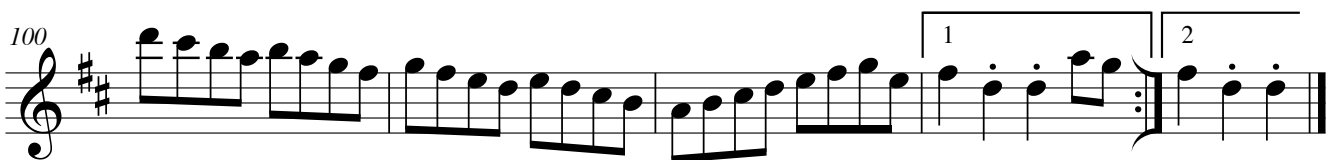
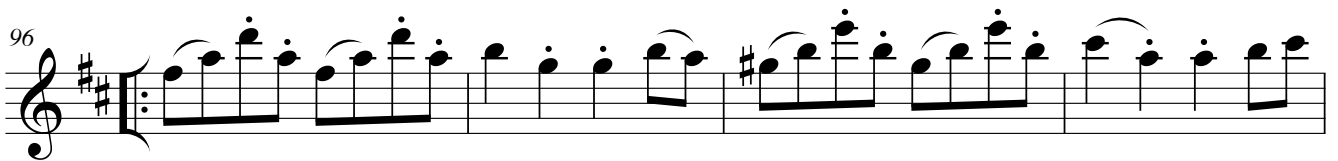
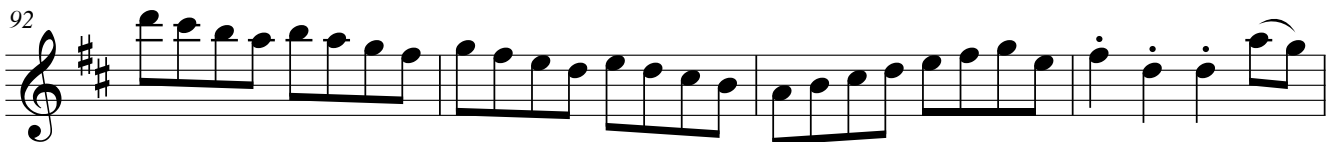
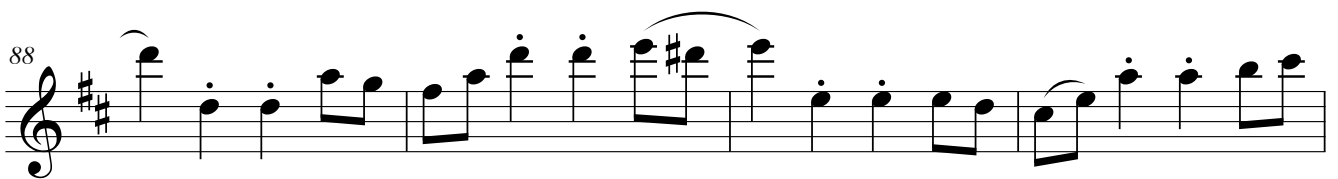
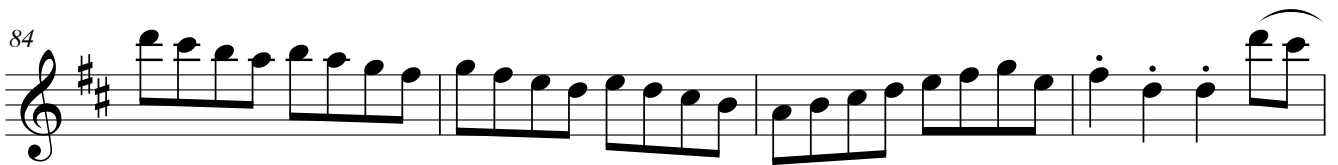
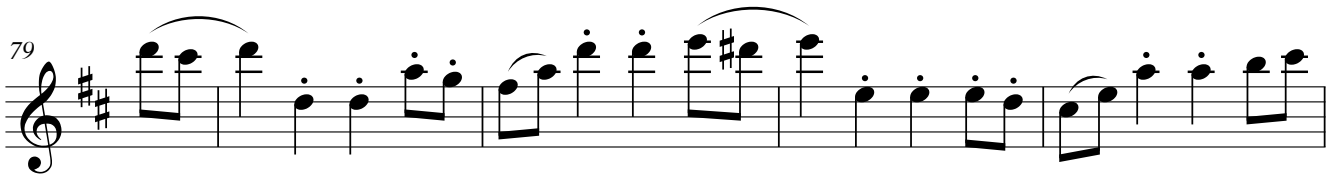
1

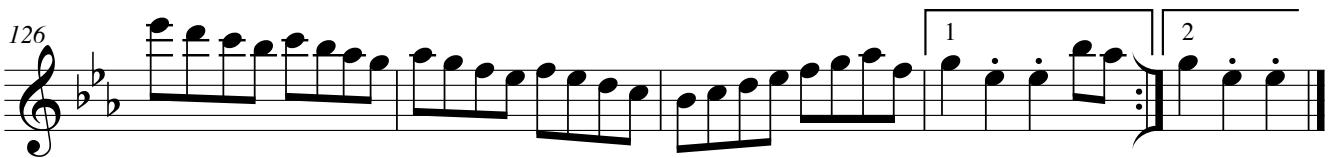
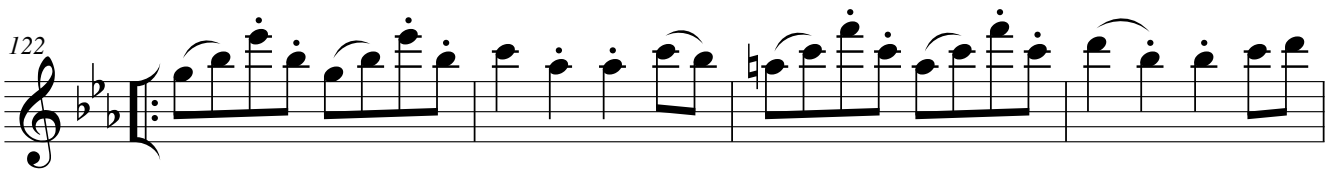
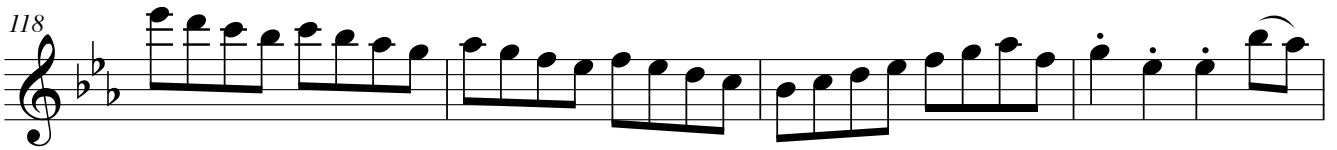
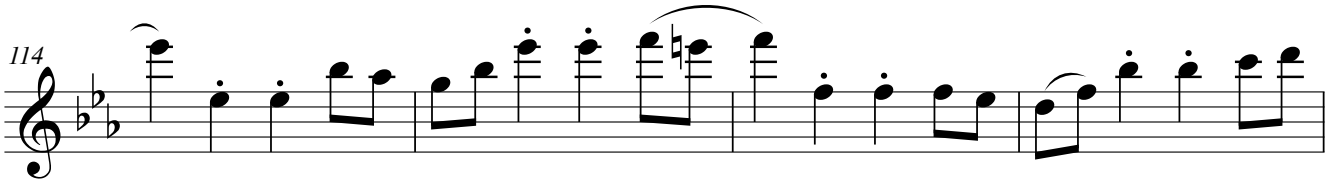
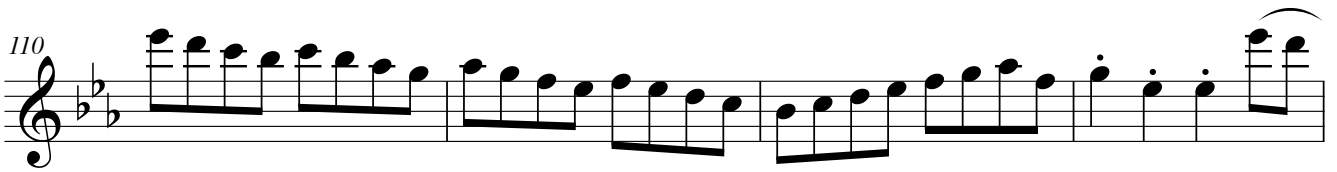
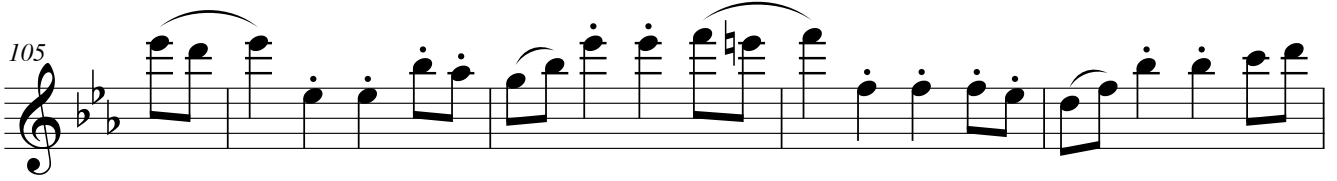
2

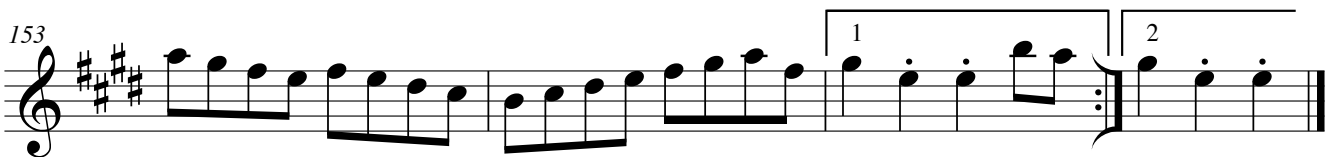
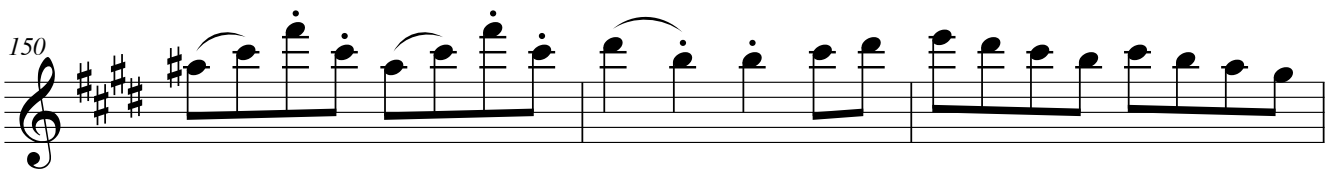
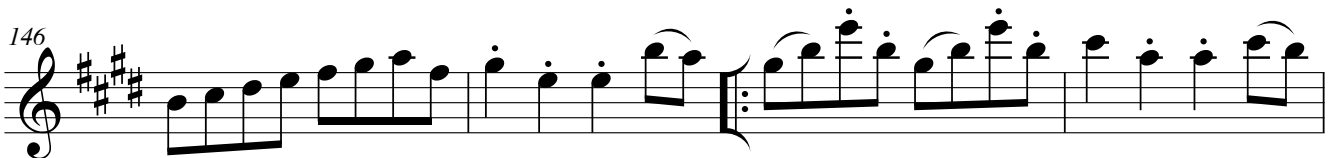
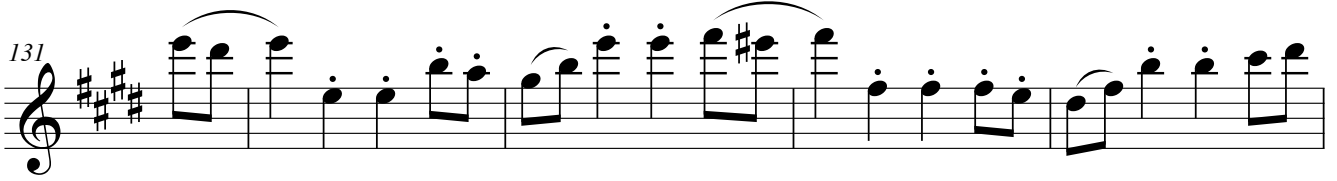
Tip: Spiele von Anfang an mit Metronom, erst wenn Du es im langsamen Tempo fehlerfrei spielen kannst, steigere das Tempo

C-Dur

Des-Dur

D-Dur

Es-Dur

E-Dur

F-Dur